



Adaptors & Couplings

W2045/46

Series Adaptors

W2045/46

Adaptors – Storz x BSP screw

Fire Hosetech stock a large range of storz adaptors and couplings in their main depot in Settle. The vast majority of our stock is in light alloy although adaptors are readily available in gunmetal if required.

There is a wide range of sizes available with many of the most common combinations listed opposite although there are many variations readily available.

When specifying the adaptors you require, the key piece of information is the "KA" dimension or the distance between the lugs. This definitive measurement is described opposite and identifies the Storz size required. To complement the adaptors we also stock blank caps, couplings, spanners and seals.

As a general rule pressure ratings are:
 Maximum w.p. 16 bar
 Test Pressure 24 bar

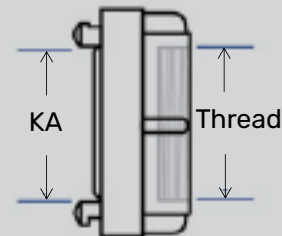
In addition to the range of Storz couplings and adaptors we are able to offer, Fire Hosetech also offer a comprehensive range of international hose connectors including: JIS, Instantaneous, Barcelona, GOST, DSP, Symmetrique, BSP, QR, Claw, McDonald, Hansen, Bauers and others.

If we haven't got it, we can certainly get it - please ask.

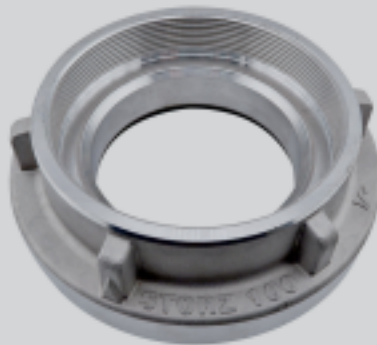
Typical Storz Adaptors - Light Alloy

Storz Size	Thread Size	Part No.	
		Male Thread	Female Thread
25A (KA31)	1"	W204505	W204605
52B (KA66)	2"	W204515	W204615
65 (KA81)	2½"	W204525	W204625
75C (KA89)	3"	W204535	W204635
100 (KA115)	4"	W204545	W204645
110A (KA133)	4"	W204555	W204655
125 (KA148)	5"	W204565	W204665
150 (KA160)	6"	W204575	W204675

Storz KA		Storz KA	
Size	KA (mm)	Size	KA (mm)
Storz D (25mm)	31	Storz 100mm	115
Storz 38mm	52	Storz A (110mm)	133
Storz C (52mm)	66	Storz 125	148
Storz 65mm	81	Storz 150 (3 lugs)	160
Storz B (75mm)	89		



W2046
Storz x Female Thread



W2045
Storz x Male Thread



Fire Hosetech Limited,

Unit 1 Sowarth Field Industrial Estate, Settle, North Yorkshire, BD24 9AG
 +44 (0)1729 825 999 | info@firehosetech.co.uk | www.firehosetech.co.uk