

HOSE ANCILLARIES

Rubber Hose and Cable Ramps

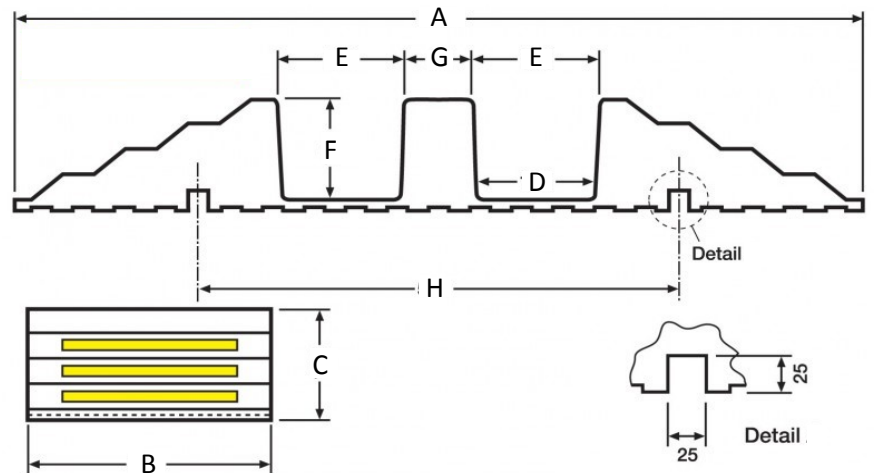
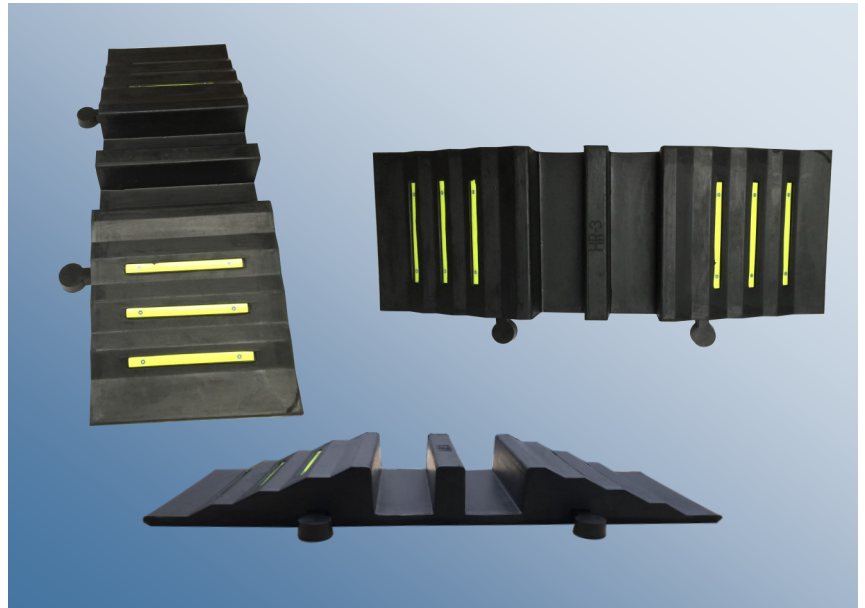
We supply a range of moulded, twin open-top channel hose ramps to accommodate the usual Emergency Services Fire Hose diameters up to and including 5".

A simple design that has been in use for decades, each ramp is supplied with 2 connectors to allow ramp widths to be extended quickly and easily. Spare connectors are available if required.

Each face of the ramp has 3 yellow visibility strips embedded into slots moulded into the rubber.

Maximum load for each ramp is 44 tonnes.

W7519 Series Rubber Hose and Cable Ramps



Hose Ramp Data Table*											
Model	Length	Width	Height	Slot Base	Slot Top	Slot Depth	Spacing	Interlock Spacing	Weight	Max Load (tonnes)	Hose Diameter
	A	B	C	D	E	F	G	H			
HR3	850	300	84	90	92	70	42	390	13	44	70mm
HR4	820	310	102	95	102	94	42	390	16	44	100mm
HR5	980	290	135	135	140	120	80	575	22	44	125mm

* Dimensions are nominal and subject to slight variation.