

WATERWAY EQUIPMENT

W4030 Series

In-Line Collecting Head - 4 Way Light Alloy

Inlets: 4 x 2½" instantaneous male to BS336:2010 c/w spring-loaded non-return valves.

Outlet: 4" BSRT female swivel to BS336:2010

or

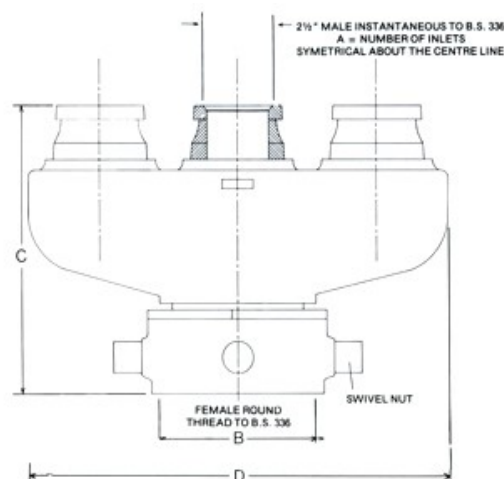
5½" BSRT female swivel to BS336:2010.

Maximum w.p. 16 bar
Test Pressure 24 bar

Available in Light Alloy

Manufactured in the UK to BS336:2010

W4030 Series In-Line Collecting Head: 4-way



No. of Inlets (Ref. A)	Outlet Dia. (Size B)	Height (Size C)	Length (Size D)	Unit Weights	
				Light Alloy	Gunmetal
4	4" (102mm)	8 5/8" (219mm)	13 1/8" (333mm)	Light Alloy	4.5 kg
				Gunmetal	N/A
4	5½" (140mm)	8 5/8" (219mm)	13 1/8" (333mm)	Light Alloy	4.5 kg
				Gunmetal	N/A