



# Collecting Heads

## W4030 & 32 Series

### Collecting Heads

### W4030 & 32 Series

#### In-Line and Radial Collecting Head

#### 2, 3 & 4-way

W4030 Series In-Line Collecting Heads  
2, 3 & 4 - Way Light Alloy

W4032 Series Radial Collecting Heads  
3 & 4 - Way Light Alloy

Inlets: 2½" instantaneous male to  
BS336:2010 c/w spring-loaded  
non-return valves.

Outlets: 4" BSRT female swivel to  
BS336:2010 - In-Line  
4" BSRT female fixed to  
BS336:2010 - Radial

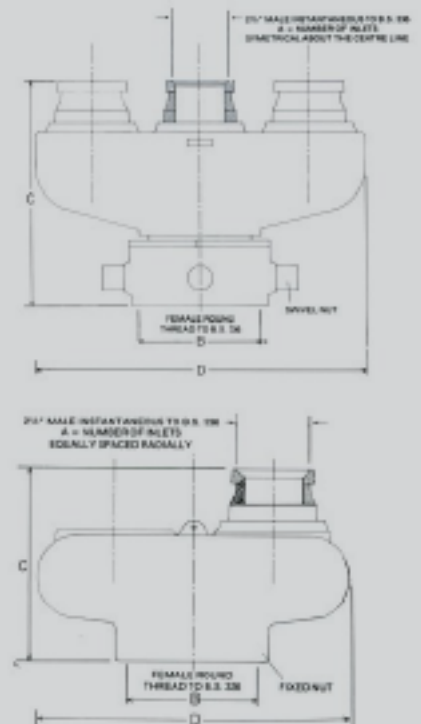
or  
5½" BSRT female swivel to  
BS336:2010 - In-Line  
5½" BSRT female fixed to  
BS336:2010 - Radial

Maximum w.p. 16 bar  
Test Pressure 24 bar

Available in Light Alloy and Gunmetal  
Manufactured in the UK to BS336:2010

Welded instantaneous n.r.v. inlets were phased out  
of production in late 2022 with stocks gradually  
replaced by units featuring BSP threaded inst.  
n.r.v. connections.

The 4-bolt type inlet connections will remain  
available as an option.



| Type<br>S - Screwed<br>4B - bolted | Part No. | No. of<br>Inlets (A) | Outlet Dia.<br>(B) | Height<br>(C) | Length<br>(D) | Approx.<br>Unit Weights |        |
|------------------------------------|----------|----------------------|--------------------|---------------|---------------|-------------------------|--------|
| In Line (S)                        | W403012F | 2                    | 102mm              | 206mm         | 233mm         | L/A                     | 4.2 kg |
| In Line (S)                        | W403017F | 2                    | 140mm              | 206mm         | 233mm         | L/A                     | 4.5 kg |
| In Line (S)                        | W403033F | 3                    | 102mm              | 220mm         | 330mm         | L/A                     | 5.3 kg |
| In Line (S)                        | W403036F | 3                    | 140mm              | 220mm         | 330mm         | L/A                     | 5.9 kg |
| In Line (S)                        | W403054F | 4                    | 102mm              | 280mm         | 480mm         | L/A                     | 9.0 kg |
| In Line (S)                        | W403057F | 4                    | 140mm              | 280mm         | 480mm         | L/A                     | 9.0 kg |
| Radial (S)                         | W403242F | 3                    | 102mm              | 160mm         | 260mm         | L/A                     | 4.4 kg |
| Radial (S)                         | W403244F | 3                    | 140mm              | 160mm         | 260mm         | L/A                     | 4.4 kg |
| Radial (S)                         | W403264F | 4                    | 140mm              | 200mm         | 350mm         | L/A                     | 11.4kg |