

WATERWAY EQUIPMENT

W2010/11 series

Adaptor—Instantaneous Male x BSP screw

Inlet: 2½" instantaneous male (BS336) x BSP thread to ISO 228 (where applicable) c/w hexagon.

Maximum w.p. 16 bar
Test Pressure 24 bar

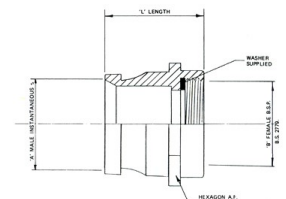
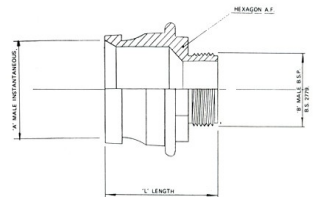
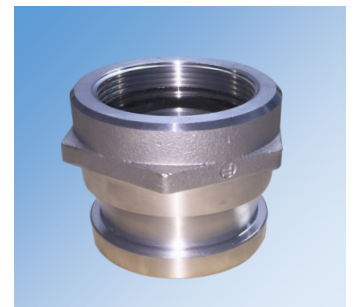
Available in Light Alloy and Gunmetal

Manufactured in the UK to BS336:2010

Fire Hosetech stock a large range of adaptors and couplings in their main depot in Settle. These cover Instantaneous, Storz, Barcelona, GOST, DSP, Symmetrique, BSP, QR, Claw, McDonald, Bauers and others. If we haven't got it, we can get it - please ask.

Note: ½" BSP threaded versions are also available to special order.

W2010/11 Series Adaptor Inst. Male x BSP Thread



| Part No. (Light Alloy) | Instantaneous Size "A" | Male BSP Size "B" | Nominal Length "L" |
|------------------------|------------------------|-------------------|--------------------|
| W201007 | 2½" BS336 | ¾" | 80mm |
| W201009 | 2½" BS336 | 1" | 80mm |
| W201011 | 2½" BS336 | 1½" | 76mm |
| W201013 | 2½" BS335 | 2" | 83mm |
| W201015 | 2½" BS336 | 2½" | 83mm |
| W201017 | 2½" BS336 | 3" | 86mm |

| Part No. (Light Alloy) | Instantaneous Size "A" | Female BSP Size "B" | Nominal Length "L" |
|------------------------|------------------------|---------------------|--------------------|
| W201107 | 2½" BS336 | ¾" | 65mm |
| W201109 | 2½" BS336 | 1" | 65mm |
| W201111 | 2½" BS336 | 1½" | 65mm |
| W201113 | 2½" BS335 | 2" | 65mm |
| W201115 | 2½" BS336 | 2½" | 73mm |
| W201117 | 2½" BS336 | 3" | 80mm |