

## Adaptors & Couplings W2008 - 2011 & W2040 Series Adaptors

### W2008 - W2011

#### Adaptor - Instantaneous x BSP thread

Male and female instantaneous adaptors x BSP threads. All the adaptors are manufactured in the UK, and fully comply with BS336:2010 and ISO 228 where applicable.

Maximum w.p. 16 bar

Test Pressure 24 bar

Available in Light Alloy and Gunmetal

Manufactured in the UK to BS336:2010

NB: ½" BSP threaded versions are also available to special order.

Thread Diameter	Inst. Male 2½"		Inst. Female 2½"	
	BSP M	BSP F	BSP M	BSP F
¾"	W201007	W201107	W200807	W200907
1"	W201009	W201109	W200809	W200909
1½"	W201011	W201111	W200811	W200911
2"	W201013	W201113	W200813	W200913
2½"	W201015	W201115	W200815	W200915
3"	W201017	W201117	W200817	W200917

Thread Diameter	Inst. Male 1½" (F.E.T.A.)*		Inst. Female 1½" (F.E.T.A.)*	
	BSP M	BSP F	BSP M	BSP F
1"	W201001	W201101	W200801	W200901
1½"	W201002	W201102	W200802	W200902
2"	W201003	W201103	W200803	W200903
2½"	W201004	W201104	W200804	W200904

\* FETA adaptors according to availability at time of order



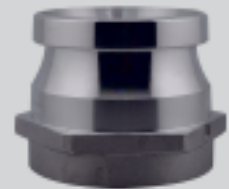
W2008



W2009



W2010



W2011

### W2040

#### Adaptor - Instantaneous x Instantaneous

Double instantaneous adaptors are useful tools. We stock the common 2½" variants and can obtain F.E.T.A. converters if required. Fire Hosetech stock a large range of adaptors and couplings in their main depot in Settle. These cover Instantaneous, Storz, Barcelona, GOST, DSP, Symmetrique, BSP, QR, Claw, McDonald, Bauers and others.

If we haven't got it, we can get it - please ask.

NB: ½" BSP threaded versions are also available to special order.

2½" Inst. Gender	Part No
M x M	W204095
F x F	W204097
M x F	W204099

W204095



W204097



W204099

### Fire Hosetech Limited,

Unit 1 Sowarth Field Industrial Estate, Settle, North Yorkshire, BD24 9AG  
+44 (0)1729 825 999 | info@firehosetech.co.uk | www.firehosetech.co.uk